

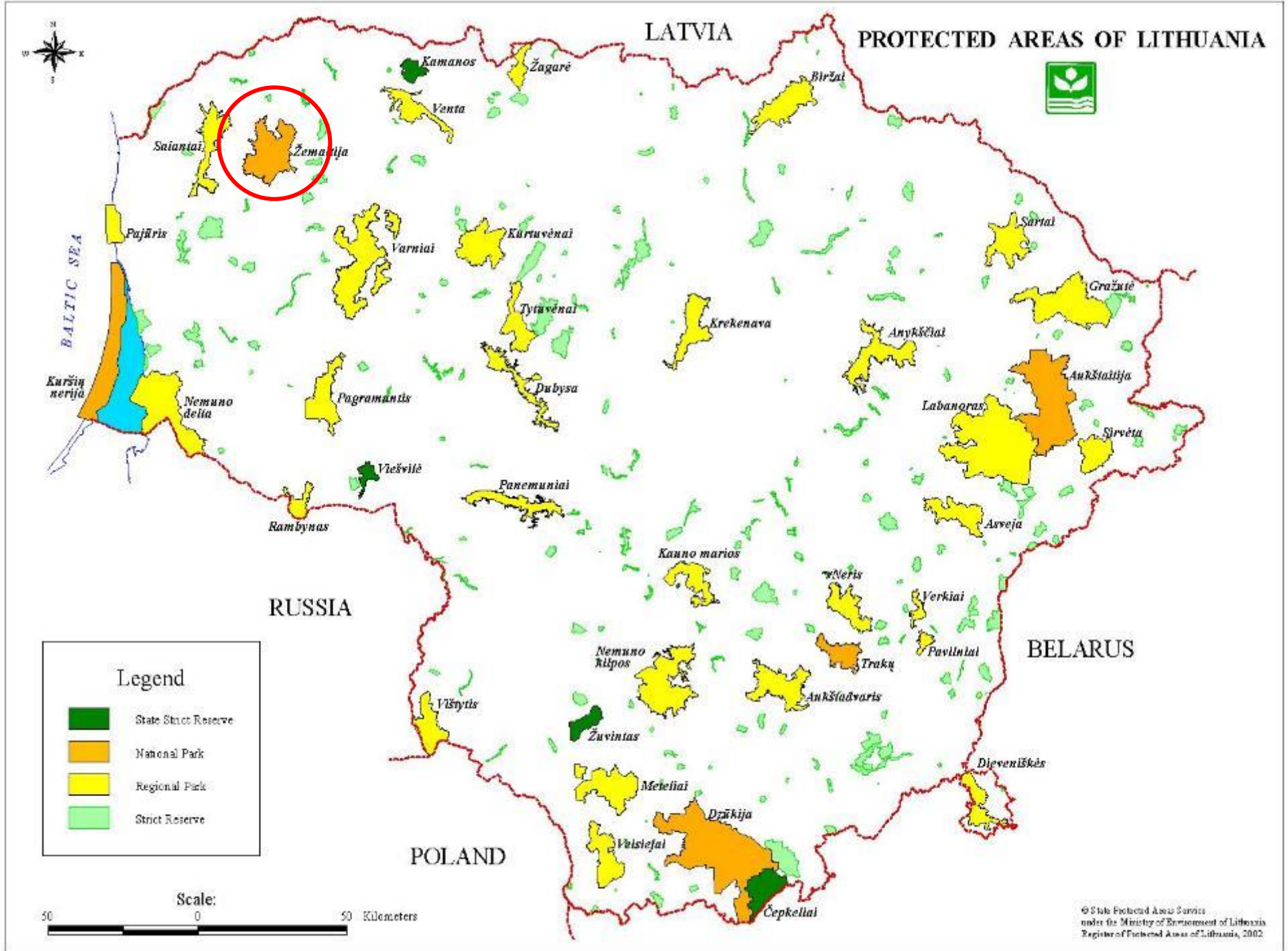
# Žemaitija National Park



Ramūnas Lydis

Director of Žemaitija National Park



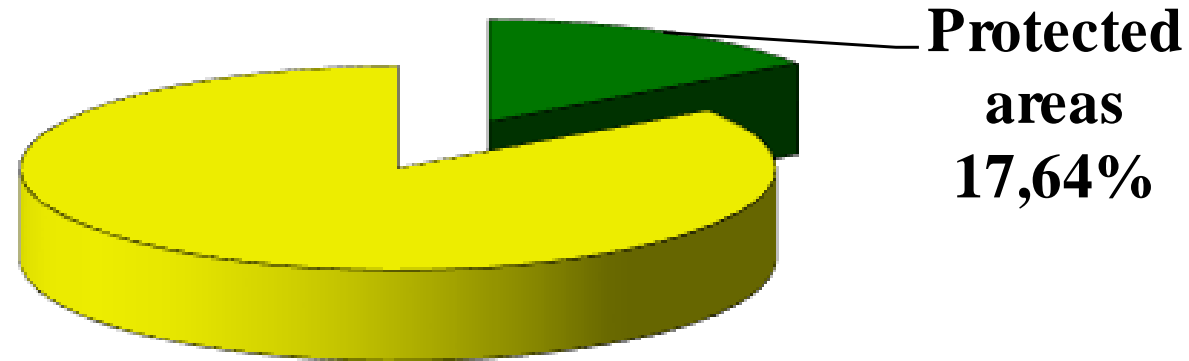


# System of Protected Areas in Lithuania

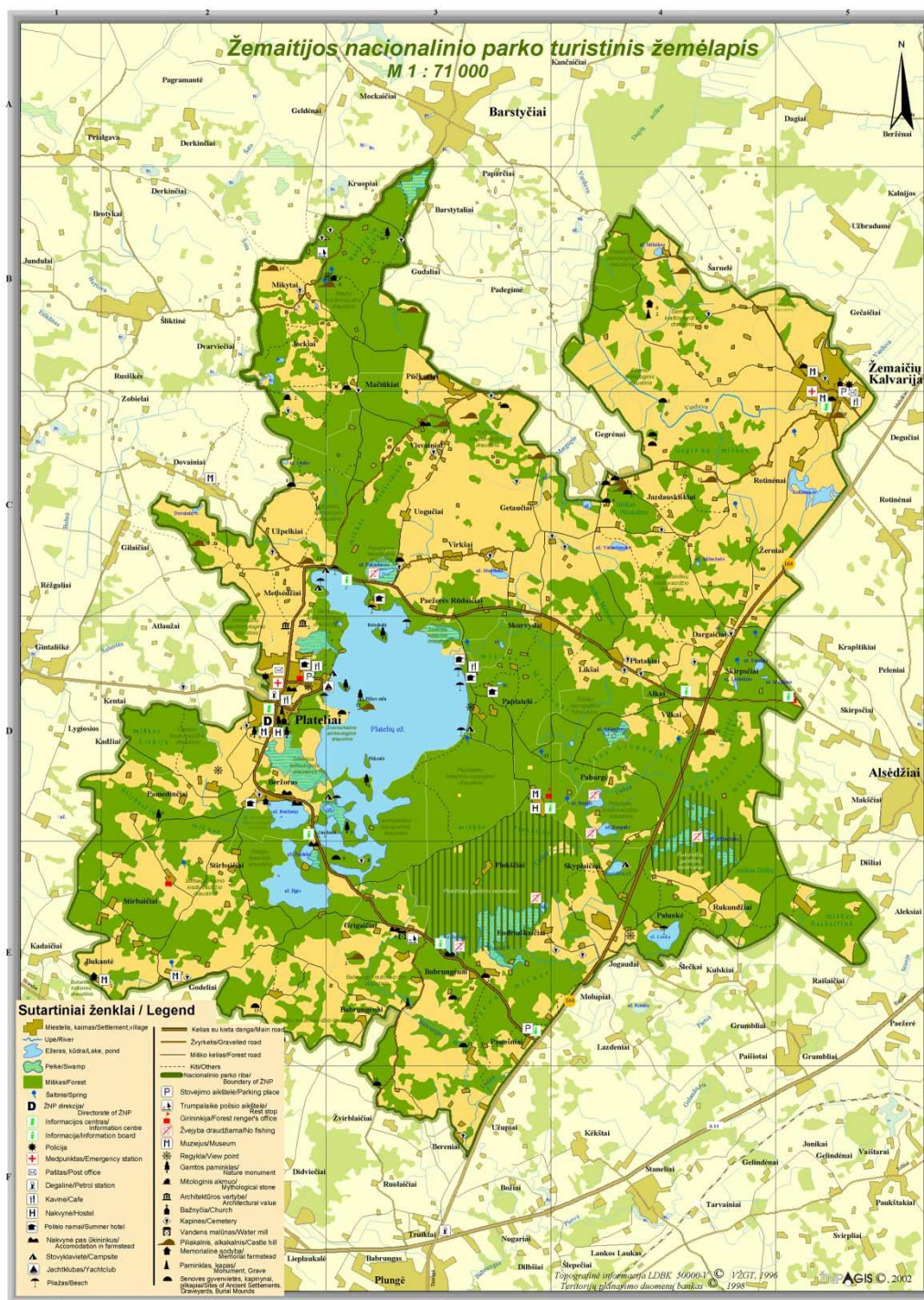
- consists of 3 natural and 2 cultural **state strict reserves**,  
5 **national** and 30 **regional parks**, and 261 **state reserves**.

Municipality boards have established over one hundred of **municipal reserves**. The system of protected areas of Lithuania that also includes protected objects of the landscape and covers about 10 thous. km<sup>2</sup>.

## SHARE OF PROTECTED AREAS (%) IN LITHUANIA







Žemaitija National Park was established in 1991 with the aim of preserving, managing and sustainably developing the areas of Žemaitija in north-western Lithuania, that are most valued for their natural and cultural qualities.

Total area – 21 720 ha.

V Category by IUCN (International Union for the Conservation of Nature).







Corncrake



Shrove Tuesday Carnival



Sustainable tourism

## INTERNATIONAL IMPORTANCE

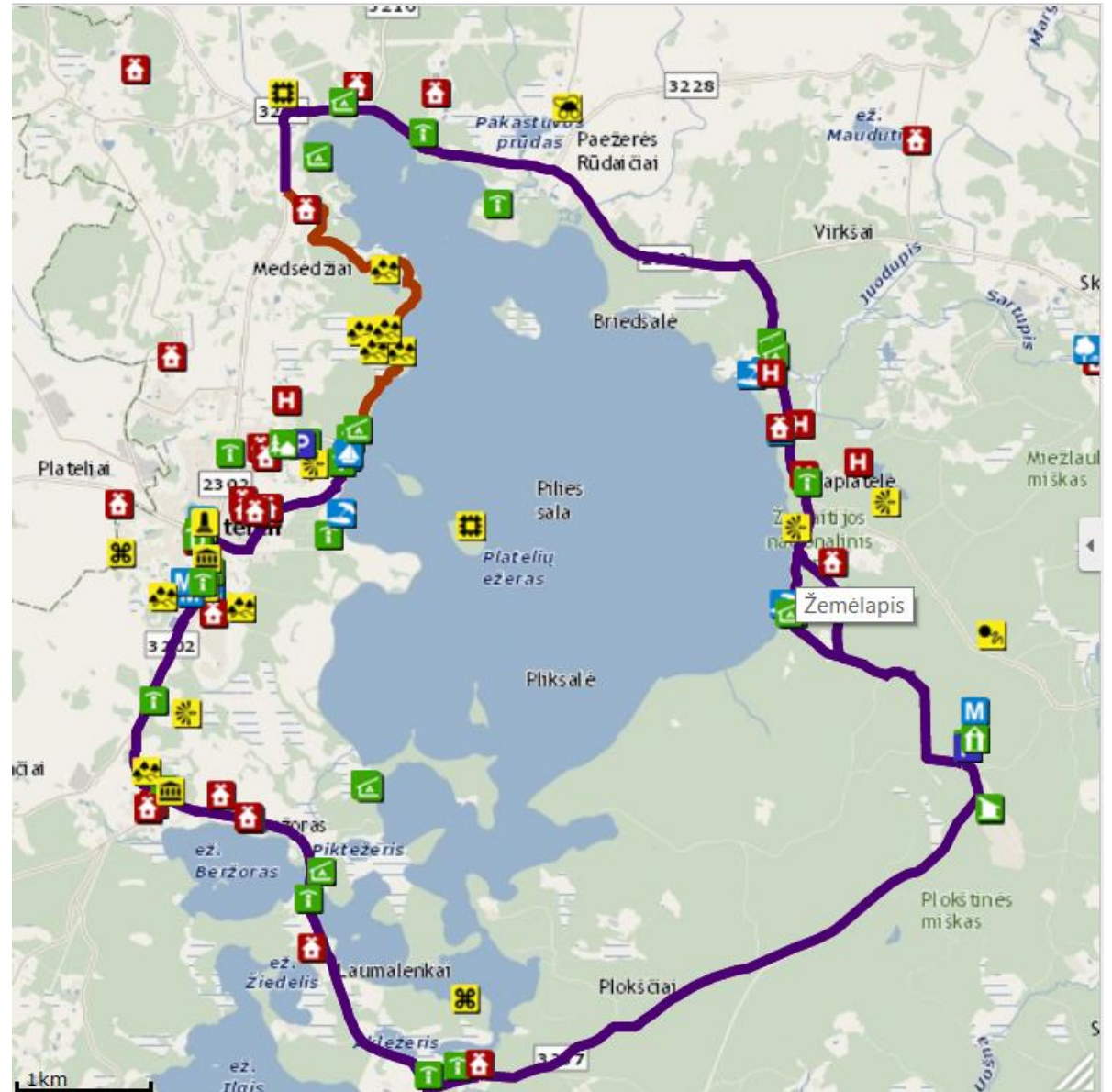
- ❖ Natura 2000 Network: Birds Directive (Hazel Grouse, Corncrake, Whooper Swan), Habitats Directive.
- ❖ EDEN Network: awarded as European Tourist Destination of Excellence in Intangible Heritage, 2008 (EDEN project backed by the European Commission promotes sustainable tourism development models across the European Union).
- ❖ Charter Area for Sustainable Tourism in Protected Areas (EUROPARC Federation).



# NATIONAL PARK ADVENTURES – bicycle road around Plateliai Lake

24 km long, 14 km from  
Plunge trail and/or Bus  
station

The road is covered with asphalt, eastern part of bicycle road is a bit hilly, mostly in the forest. You can discover typical natural forest habitats and natural lake. In part of road you can see elements of traditional architecture, objects of intangible heritage. Part of road is adopted for people with disabilities.





# Beginning of Babrungas River

Coordinates: 56° 0' 29.04", 21° 50' 51.73" (WGS)

## Short description:

The place where begins the biggest river in Zemaitija National park – Babrungas river.





# Plokstine Strict Nature Reserve

**Coordinates (infostand and rest place):** 56° 0' 57.12", 21° 52' 48.33" (WGS)

**Short description:**

Plokštinė reserve is aimed to preserve standard complex of Plokštinė woods and marsh with ecosystems typical for this region, rare species of plants, mushrooms and animals, natural streams of Juodupis and Uošna and unique geomorphological structure of Plokščiai thermo-sinkhole.





# Cold War Museum

**Coordinates:** 56° 1' 49.22", 21° 54' 22.18" (WGS)

**Short description:**

Cold War Museum is located in the former Soviet Union's complex of ballistic missile silo launch. Since 1963 up to 1978, there had been deployed four medium-range ballistic missiles SS-4, armed with 2- megaton power thermonuclear warheads. These missiles, together with the nearby terrestrial platforms of analogue missile launching, had created a common Soviet nuclear armament group in Lithuania, which was able to destroy all the Europe.



2020-03-04



# Plokstine beach

**Coordinates:** 56° 1' 49.22", 21° 54' 22.18" (WGS)

**Short description:**

The place where you can just relax and enjoy. Also, you can see great colorful view to the Plateliai Lake, try tasty water from St. Jono spring, and smelt forest smell





# Paplatele walking trail

**Coordinates (start point):** 56° 2' 48.7", 21° 53' 8.88" (WGS)

**Short description:**

The trail has way finding signs, and there is a National Park Information Board at the starting point. The trail is built with several types of paving: natural (0.6 km), hard packed soil (1.3 km) and asphalt (0.4 km).

Exclusiveness of Trail Experience: landscape, sculptures, woodland key habitat, Sultekis pond.



2020-03-04



# Pakastuva pound and bird watching platform

Coordinates: 56° 4' 15.31", 21° 51' 23.45" (WGS)

## Short description:

The place where you can discover bird species and understand forming of marches.



# Mound of Užpelkiai

**Coordinates:** 56° 4' 16.43", 21° 49' 24.5" (WGS)

**Short description:**

Mounds of Užpelkiai. The trip point, where you can understand part of culture heritage, about history of Samogitia





# Garden of Litvak

**Coordinates:** 56° 3' 41.14", 21° 49' 16.08" (WGS)

**Short description:**

Garden with iron apple trees, with represent living areas of Litvak in Lithuania. This garden told as story about Litvak history in Lithuania and all around the world



2020-03-04

# Plateliai Viewing Platform

**Coordinates:** 56° 2' 49.3", 21° 49' 41.98" (WGS)

**Short description:**

This viewing platform overlooks Lake Plateliai panoramic view together with Plikšalės, Pilies, Veršių islands, Šventorkalnis peninsula and Plokštinė forests. Place adopted for people with disabilities (stand in Brile and ect.)





# Plateliai Visitor Centre

**Coordinates:** 56° 2' 32.43", 21° 48' 54.7" (WGS)

**Short description:**

After arriving at Plateliai, notice the dark brown wooden house with a sloping Samogitian roof in the center of the town. Do not be fooled by the outside of the hundred-year old building – inside it is the national park’s visitor center with a modern exhibition, which includes touch screens, sound effects, natural games and descriptions of various routes and points of interest. Partly adopted for people with disabilities



2020-03-04

# Expositions of Žemaitija National Park and Shrove Tuesday

## Tuesday

**Coordinates:** 56° 2' 17.65", 21° 48' 51.7" (WGS)

**Short description:**

**New, attractive, interesting, modern expositions, new experience and the spirit of Samogitia.**

Manor of Plateliai has opened its doors to visitors. In the former estate Stable is founded Shrove Tuesday Museum, in the Barn – a modern historical-ethnographic, nature exposition, exhibition hall. A colorful exhibition of nature offers access to interactive wildlife of Park. Ethnographic exhibition highlights the ancient Plateliai – crafts, entertainments, courtiers and ordinary people's lives. Visiting the Shrove Tuesday Museum at any time of year one can feel like in a whirl of Samogitian winter games. We invite you to visit.



2020-03-04





**One of our main tasks - to carry out ethnic and cultural heritage**



**Saint John celebration - Joninės (Rasos).**





**Shrovetide carnival is very common in this part of Lithuania. This celebration set in seven weeks before Easter.**





A photograph of a forest with snow on the ground and moss on the forest floor. The trees are tall and thin, and the ground is covered in a mix of snow and green moss. The text "Thanks for your attention" is overlaid in the center of the image.

Thanks for your attention

Ramūnas Lydis  
Director of Žemaitija National park  
[ramunas.lydis@zemaitijosnp.lt](mailto:ramunas.lydis@zemaitijosnp.lt), +370 679 06745  
[www.zemaitijosnp.lt](http://www.zemaitijosnp.lt)