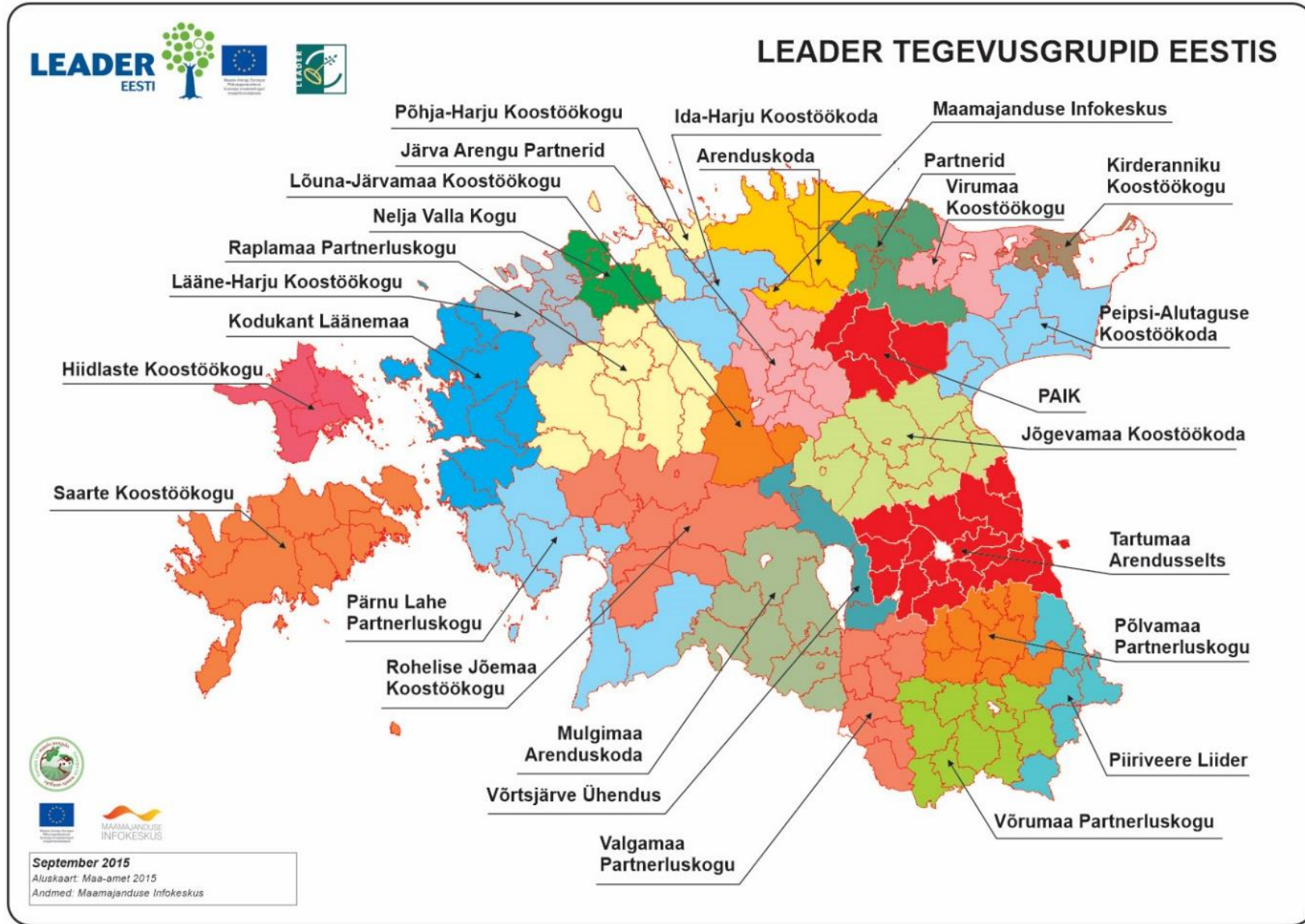




# NORTH HARJU PARTNERSHIP NGO

MARGIT PÄRTEL, CEO



- **NGO North Harju Partnership** is one of the youngest of the 26 Estonian LEADER – action groups who began operations with 11 founding members on June 16, 2008
- **65 organizations** have by now joined the Partnership bringing together the local governments, civil societies and entrepreneurs of Jõelähtme, Viimsi and Rae parishes

# NORTH-HARJU REGION OF ACTIVITY: TALLINN SURROUNDINGS

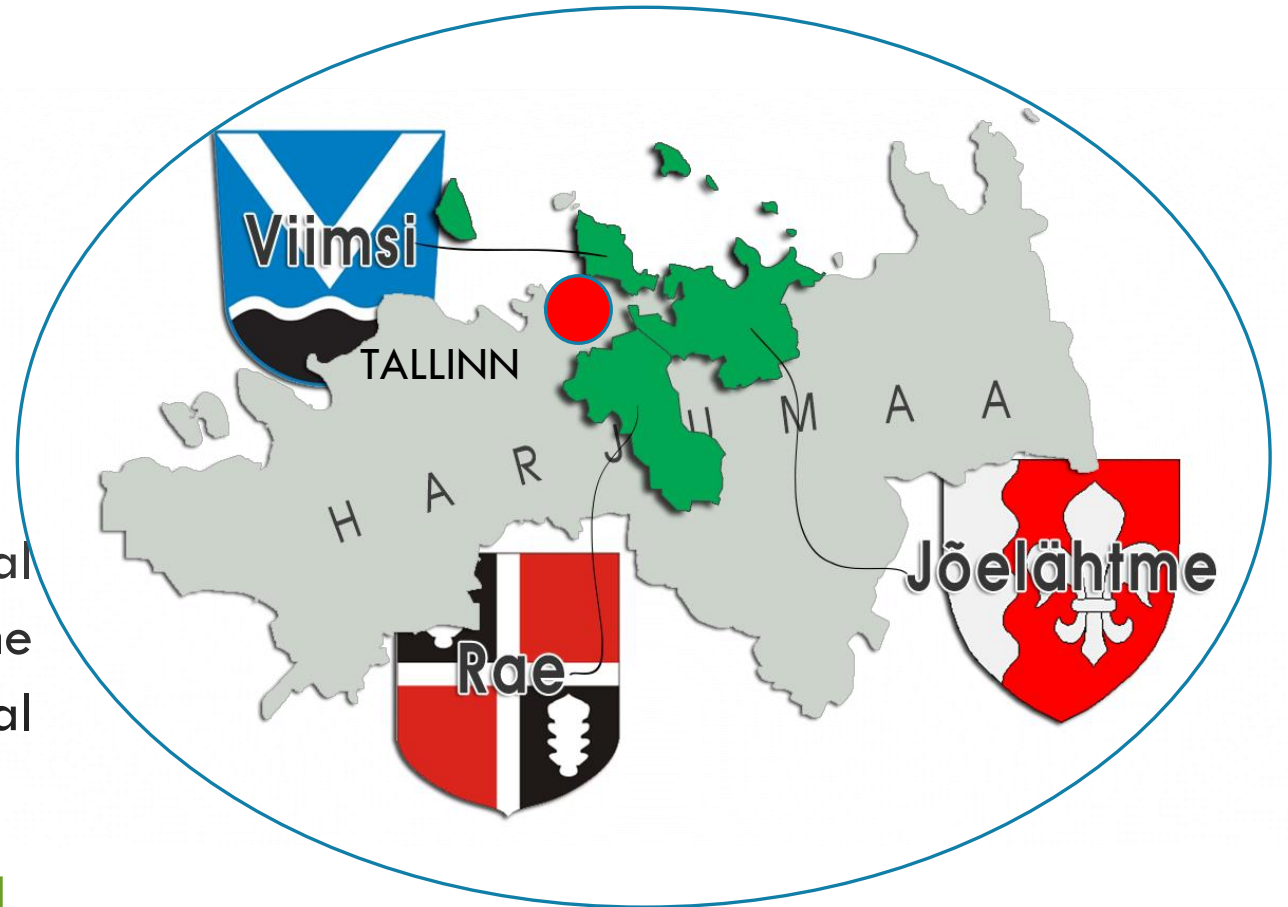
- Jõelähtme
- Rae and
- Viimsi parishes

Population: 45 506 inhabitants (01.01.2019)

Area: 490.4 km<sup>2</sup>

Landscapes: Beautiful forests, several cultural heritage landscapes and long coastline (Jõelähtme and Viimsi have sea border). In total 18 islands (biggest Naissaar and Prangli)

2008 - 2018 Decade of activity!



# STRATEGY 2015-2020 AND VISION 2020

By 2020 North Harju Partnership area has developed several new local products and services; new recreation and free-time spending possibilities; active and socially inclusive local community; well maintained and high quality living environment.

In order to reach previously proposed vision it is necessary to develop local entrepreneurship, activate local communities and maintain and develop the living environment. These are North Harju Partnerships three fields of action supported by 3 similar support measures. In addition the 4th support measure is opened for cooperation.

**In total North Harju Partnership has to divide between 4 measures: 2 175968 €**

2015	2016	2017	2018	2019	2020
0 €	742 665 €	742 665 €	690 638 €	480 709 €	0 €



# 1. MEASURE “DEVELOPING LOCAL ENTERPRENEURHIPS”



1.measure covers 40% from the total period budget

28 projects financed







## 2. MEASURE “ACTIVATING AND SOCIAL INCLUSION OF COMMUNITIES“



2.measure covers 20% from the total period budget

12 projects financed







# 3. MEASURE “MAINTAINING AND CREATING VALUE TO THE LIVING ENVIRONMENT”



3.measure covers 35% from the total budget

28 projects financed

## 4. MEASURE COOPERATION



- „Multifunctional sustainable tourism entrepreneurship joint development“ / Estonia / Lithuania / Latvia
- „FINEST COUNTRYSIDE- Accessible coastal and village tourism in Baltic Sea Region“ / Estonia / Finland
- „Development of north coast tourism“ / 6 Estonian partners
- „County cooperation“ / 4 Estonian partners

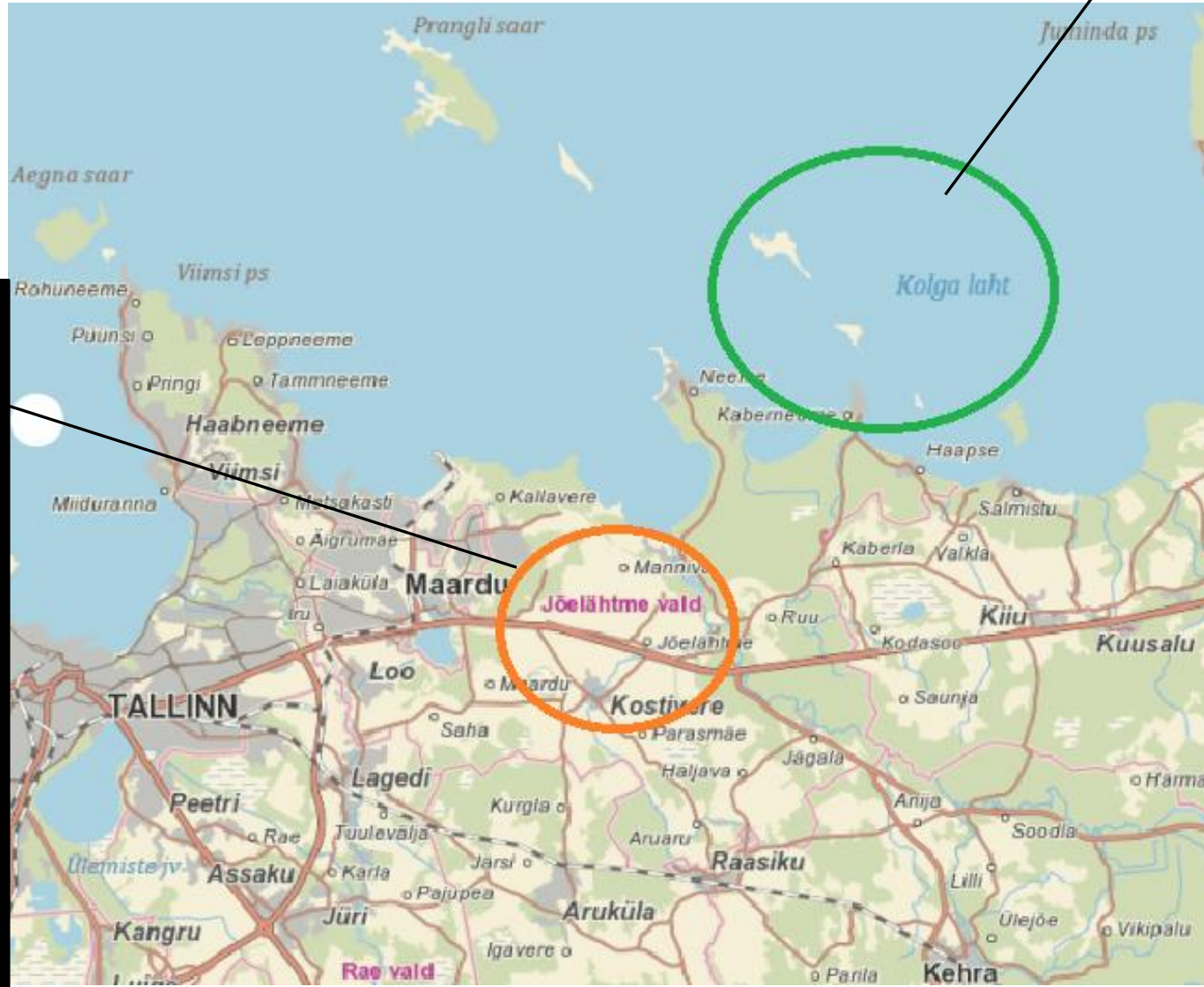
4.measure covers 5% from the total budget

4 projects financed



# PROTECTED AREAS

Rebala Heritage Reserve  
25 m<sup>2</sup>  
Historical agricultural landscape with more than 300 archaeological monuments (most 1 millennium BC)



Kolga Bay Landscape Reserve  
19 m<sup>2</sup>  
Small islands and coastline - the main values are habitat types in the Natura 2000 network



# OUR TEAM HERE AT RUSNE



# ARNO KANNIKE



**Chairman of the board North-Harju Partnership LAG**

**Iru Ämma Klubi MTÜ / Club of Iru's mother-in-law NGO**

# MARGIT PÄRTEL

**CEO of North-Harju Partnership LAG**

**Ajaveski MTÜ / Windmill NGO**





# AVE KÄIGE



**Member of North-Harju Partnership LAG**

**Viimsi Ettevõtlike Daamide Assotsiatsioon  
MTÜ / Association of Entrepreneurial  
Ladies of Viimsi NGO**

**EDUARD ERKKI LAUR**

**MARGUS LAULA**

**Member of  
North-Harju  
Partnership LAG**

**Uuesalu  
külaselts MTÜ /  
Society of  
Uuesalu Village  
NGO**



**Member of  
North-Harju  
Partnership LAG**

**Peetri selts MTÜ  
/ Society of  
Peeter Village  
NGO**





**WELCOME TO ESTONIA**

2008 – 2018

Decade of activity!